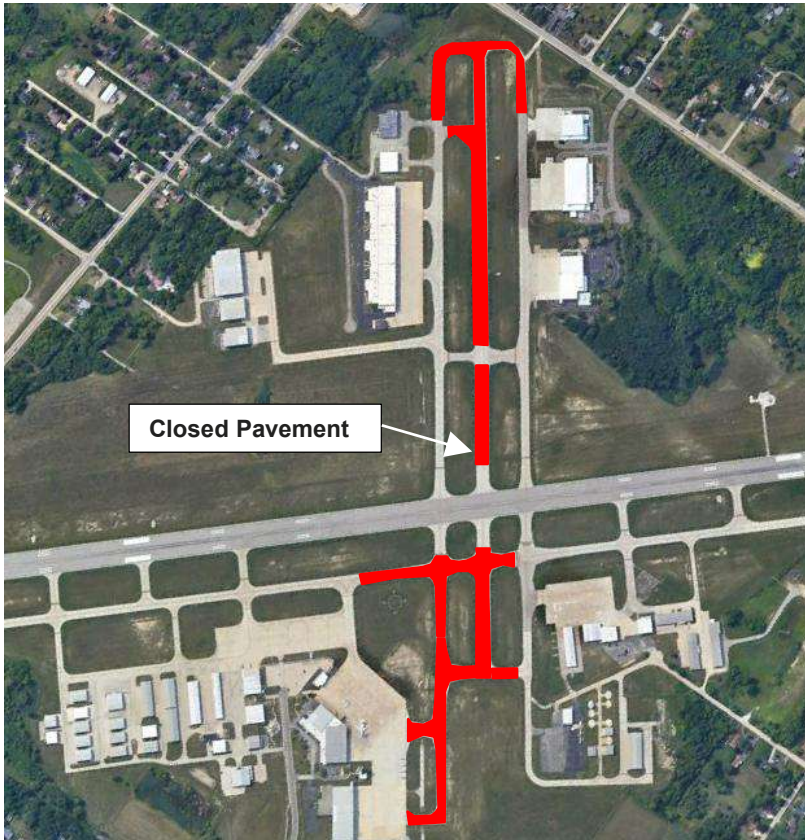


**WAUKEGAN NATIONAL AIRPORT**  
**REHABILITATE AIRFIELD LIGHTING**  
**CHANGES TO FIELD CONDITIONS –**  
**CONSTRUCTION PHASE CHANGE**



Issued September 9, 2022



**Phase:** Phase 4A-1

**Start Date:** September 12, 2022

**Estimated End Date:** September 26, 2022

**Estimated Duration:** Approx. 14  
Calendar Days

**Closures:**

- Runway 14/32
- Taxiway A from M1 to C
- Taxiway B from Runway 5/23 to M3
- Taxiways B1, B3, B4, C3, M2 and M3

**If you have any questions or would like more information, please contact:**

**Patrick Lutker**  
**Deputy Director**  
Waukegan National Airport  
(815) 690-1163

Work areas and dates are estimated and subject to change. Not all pavements inside work areas may be closed.

**Check NOTAM's daily for availability / closures of airfield pavements and approaches.**