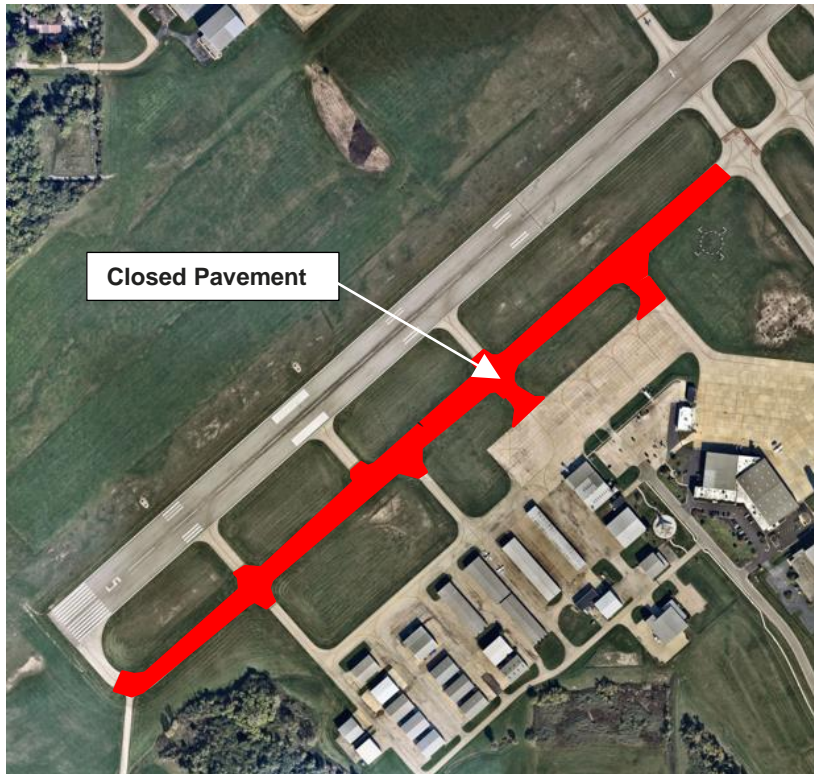


**WAUKEGAN NATIONAL AIRPORT**  
**REHABILITATE AIRFIELD LIGHTING**  
**CHANGES TO FIELD CONDITIONS –**  
**CONSTRUCTION PHASE CHANGE**



Issued July 12, 2022



**Phase:** Phase 2A

**Start Date:** July 14, 2022

**Estimated End Date:** August 18, 2022

**Estimated Duration:** Approx. 36  
Calendar Days

**Closures:**

- Taxiway A, West of Taxiway B
- Taxiways A1, A2, A3, A4, S1, S2, S3, and M1

**If you have any questions or would like more information, please contact:**

**Patrick Lutker**  
**Deputy Director**  
Waukegan National Airport  
(815) 690-1163

Work areas and dates are estimated and subject to change. Not all pavements inside work areas may be closed.

**Check NOTAM's daily for availability / closures of airfield pavements and approaches.**